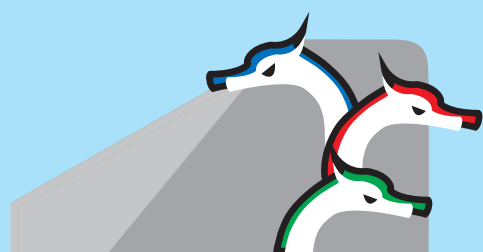


## PRODUCT SELECTOR **2008**



**LADON** CLEARLY DIFFERENT

## True Day-Night Cameras

TRY OUR PRODUCT CONFIGURATION TOOL AT [WWW.LADON-SYSTEMS.COM](http://WWW.LADON-SYSTEMS.COM)



	WDNT5201	HDNT4800	DNT5404	DNT5400
<b>Resolution</b>	520TVL (530TVL - BW mode)	480TVL (600TVL - BW mode)	540TVL (600TVL - BW mode)	540TVL (600TVL - BW mode)
<b>Minimum Light</b>	0,0045lux (BW mode, F1.4, AGC On, 10 IRE)	0,0012lux (BW mode, F1.4, AGC On, 10 IRE)	0,016lux (BW mode, F1.4, AGC On, 10 IRE)	0,003lux (BW mode, F1.2, AGC On, 10 IRE)
<b>Lens</b>	CS mount	CS mount	CS mount	CS mount
<b>Other</b>	Sony 1/3" Double density CCD, WDR, ICR, BLC, AGC, ATW, Privacy zone, Remote control	Sony 1/2" Exview CCD, ICR, BLC, AGC, ATW, Remote control	Sony 1/3" Exview CCD, ICR, BLC, AGC, DNR, ATW, OSD, Privacy zone	Sony 1/3" CCD, ICR, BLC, AGC, ATW
<b>Power supply</b>	12Vdc / 24Vac	12Vdc / 24Vac	12Vdc / 24Vac or 230Vac	12Vdc / 24Vac or 230Vac

## Easy Day-Night Cameras



	DNS5404	DNS5400	DNS4200
<b>Resolution</b>	540TVL	540TVL	420TVL
<b>Minimum Light</b>	0,03lux (F1.2, AGC On, 10 IRE)	0,01lux (F1.2, AGC On, 10 IRE)	0,03lux (F1.2, AGC On, 10 IRE)
<b>Lens</b>	CS mount	CS mount	CS mount
<b>Other</b>	Sony 1/3" CCD, BLC, AGC, ATW, DNR, OSD, Privacy zone, Remote control	Sony 1/3" CCD, BLC, AGC, ATW	Sony 1/3" CCD, BLC, AGC, ATW
<b>Power supply</b>	12Vdc / 24Vac or 230Vac	12Vdc / 24Vac or 230Vac	12Vdc / 24Vac or 230Vac

## Fixed Domes



	VFD5622	FD5620	FD5210	FD4210
<b>Resolution</b>	560TVL	560TVL	520TVL	420TVL
<b>Minimum Light</b>	0,2lux (F1.4, AGC On, 10 IRE); 0lux (IR led ON)	0,02lux (F1.3, AGC On, 10 IRE)	0,08lux (F2.0, AGC On, 10 IRE)	0,08lux (F2.0, AGC On, 10 IRE)
<b>Lens</b>	f=3.3~12mm, F1.4 DC Iris Varifocal; IR corrected lens	f=2.8~10mm, F1.3 DC Iris Varifocal	f=3.7mm, F2.0 Fixed lens	f=3.7mm, F2.0 Fixed lens
<b>Other</b>	Sony 1/3" CCD, ICR, BLC, AGC, ATW, Vandalproof, IP66, IR distance 30m	Sony 1/3" CCD, BLC, AGC, ATW	Sony 1/3" CCD, BLC, AGC, ATW	Sony 1/3" CCD, BLC, AGC, ATW
<b>Power supply</b>	12Vdc / 24Vac	12Vdc / 24Vac	12Vdc	12Vdc

## Bullet and Hidden Cameras



	CBC3310	CPC3840S	CSC3840
<b>Resolution</b>	330TVL Colour	380TVL Colour	380TVL Colour
<b>Minimum Light</b>	0,5lux (F2.0)	0,2lux (F2.0)	0,2lux (F2.0)
<b>Lens</b>	f=3,6mm, F2.0 Fixed lens	f=3,7mm, F2.0 Fixed pinhole lens	f=3,7mm, F2.0 Fixed pinhole lens
<b>Other</b>	Sony 1/4" CCD, AGC, ATW	Sony 1/3" CCD, AGC, ATW, PIR sensor (only "S" model)	Sony 1/3" CCD, AGC, ATW
<b>Power supply</b>	12Vdc	12Vdc	12Vdc

## Waterproof IR Cameras



	IRVT5422	IRV5422	IRF5412	IRF4212
<b>Resolution</b>	540TVL	540TVL	540TVL	420TVL
<b>Minimum Light</b>	0,06lux (F1.4, AGC On, 10 IRE); 0lux (IR led ON)	0,06lux (F1.4, AGC On, 10 IRE); 0lux (IR led ON)	0,02lux (F1.6, AGC On, 10 IRE); 0lux (IR led ON)	0,04lux (F1.6, AGC On, 10 IRE); 0lux (IR led ON)
<b>Lens</b>	f=3.3~12mm, F1.4 DC Iris Varifocal; IR corrected lens	f=3~9mm, F1.4 DC Iris Varifocal; IR corrected lens	f=4.3mm, F1.6 Fixed lens	f=4.3mm, F1.6 Fixed lens
<b>Other</b>	Sony 1/3" CCD, Real D-N, BLC, AGC, ATW, Vandalproof, IP66, IR 35m	Sony 1/3" CCD, BLC, AGC, ATW, Vandalproof, IP66, IR distance 35m	Sony 1/3" CCD, BLC, AGC, ATW, IP66, IR distance 25m	Sony 1/3" CCD, BLC, AGC, ATW, IP66, IR distance 25m
<b>Power supply</b>	12Vdc / 24Vac	12Vdc	12Vdc	12Vdc

## Vandalproof Speed Domes



	VSD48Z360	VSD48Z260
<b>Resolution</b>	480TV	480TVL
<b>Minimum Light</b>	0,15lux (F1.6, BW mode)	0,15lux (F1.6, BW mode)
<b>Lens</b>	f=3.4~122.4mm (36 x zoom)	f=3.5~91mm (26 x zoom)
<b>P/T operations</b>	256 Presets, 4 sequences, max speed: 430°/sec (Pan) - 200°/sec (Tilt)	256 presets, 4 sequences, max speed: 430°/sec (Pan) - 200°/sec (Tilt)
<b>Other</b>	Sony 1/4" Exview CCD, ICR, BLC, AGC, ATW, IP67, Vandalproof, Privacy zone, Remote control	Sony 1/4" Exview CCD, ICR, BLC, AGC, ATW, IP67, Vandalproof, Privacy zone, Remote control
<b>Power supply</b>	24Vac	24Vac

## Speed Domes



	ISD52Z300 / OSD52Z300	ISD48Z120 / OSD48Z120
<b>Resolution</b>	520TVL (570TVL - BW mode)	480TVL
<b>Minimum Light</b>	0,1lux (F1.6, BW mode)	1 lux
<b>Lens</b>	f=3,3mm~99mm (30 x zoom)	f=4~48mm (12 x zoom)
<b>P/T operations</b>	256 presets, 8 sequences, 1 cruise, max speed: 250°/sec	256 presets, 8 sequences, 1 cruise, max speed: 300°/sec
<b>Other</b>	Sony 1/4" CCD, ICR, BLC, AGC, ATW, remote control, schedule, IP66 (OSD52Z300)	Sony 1/4" Exview CCD, ICR, BLC, AGC, ATW, Remote control, IP66 (OSD48Z120)
<b>Power supply</b>	24Vac	12Vdc (ISD48Z120); 24Vac (OSD48Z120)

## Lenses



	03V05050014D-IR	03V02812014D-IR	03V03008010D-IR
<b>Focal length</b>	5~50mm	2.8~12mm	3~8mm
<b>F number</b>	F1.4-360	F1.4-360	F1.0-360
<b>Other</b>	CS Mount, DC drive, IR corrected	CS Mount, DC drive, IR corrected	Aspheric, CS Mount, DC drive, IR corrected

## DVRs

TRY OUR PRODUCT CONFIGURATION TOOL AT [WWW.LADON-SYSTEMS.COM](http://WWW.LADON-SYSTEMS.COM)



	LD4016-T	LD4016	LD4008
<b>Number of video/audio inputs</b>	16/2	16/2	8/2
<b>Maximum recording frame rate</b>	400 fps	200 fps	100 fps
<b>Compression</b>	MPEG4	MPEG4	MPEG4
<b>Features</b>	AVI export, mouse control, mobile phone view, Dynamic IP address, Ladon CMS, 2 independent main outputs	AVI export, mouse control, mobile phone view, Dynamic IP address, Ladon CMS	AVI export, mouse control, mobile phone view, Dynamic IP address, Ladon CMS
<b>Optional</b>	DVD RW, VGA out, remote keyboard	DVD RW, VGA out, remote keyboard	DVD RW, VGA out, remote keyboard



	LD2016-250	LD2008-250
<b>Number of video/audio inputs</b>	16/1	8/1
<b>Maximum recording frame rate</b>	100 fps	100 fps
<b>Compression</b>	MPEG4	MPEG4
<b>Features</b>	250GB HDD (5 years warranty), mouse control, mobile phone view, Dynamic IP address, Ladon CMS	250GB HDD (5 years warranty), mouse control, mobile phone view, Dynamic IP address, Ladon CMS



	LD1016-250	LD1009-250	LD1004-160	LD0504-160
<b>Number of video/audio inputs</b>	16/4	9/4	4/4	4/0
<b>Maximum recording frame rate</b>	100 fps	100 fps	100 fps	100 fps
<b>Compression</b>	MPEG4	MPEG4	MPEG4	MPEG4
<b>Features</b>	250GB HDD (5 years warranty), AVI export, mobile phone view, Dynamic IP address, Ladon CMS, VGA out	250GB HDD (5 years warranty), AVI export, mobile phone view, Dynamic IP address, Ladon CMS, VGA out	160GB HDD (5 years warranty), AVI export, mobile phone view, Dynamic IP address, Ladon CMS, VGA out	160GB HDD (5 years warranty), AVI export, mobile phone view, Dynamic IP address, Ladon CMS, VGA out
<b>Optional</b>	CD RW	CD RW	-	-

## Accessories for DVR



	SPEED DOME AND DVR KEYBOARD	DVR KEYBOARD	OMNICOM OUTPUT MODULE
<b>Features</b>	3D joystick	Control up to 16 DVRs	Remote control via RS485
	Controls up to 255 devices for both speed domes and DRVs	Remote control via RS485	Up to 10 relay outputs
	Multiprotocol	Controls all the functions of the DVRs ( LD4000 and LD2000 families only)	
	Remote control via RS485		

## LADON SOFTWARE

With Ladon Software you can control all the devices with LAN connection shown in this brochure. This feature makes Ladon Software the best solution for all your video security applications. All Ladon products can also be controlled via Ladon-mobile.



Ladon Systems also offer a complete range of the following products:

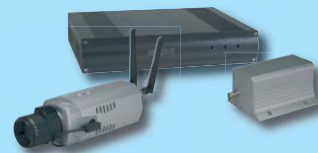
### Tracking Systems



### Car Plate Cameras



### IP Cameras and Video Servers



### Vandalproof Housings



### UTP Transmitters & Receivers



### Fiber Optics Transmission Systems



### Infrared Illuminators



### CRT Monitors



### WiFi Systems





**Distributed by:**

**Ladon Systems**  
**Via Vergnano n.16**  
**25125 Brescia (Italy)**  
**Tel. +44 (0) 7846388954**  
**www.ladon-systems.com**