



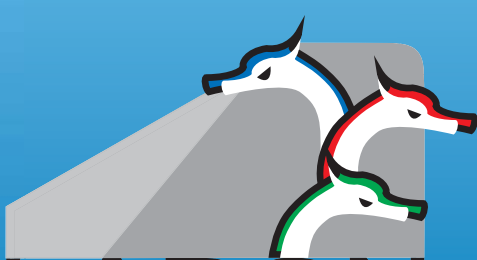
**CAR PLATE CAMERAS & ANPR**



Image from a standard D&N Camera

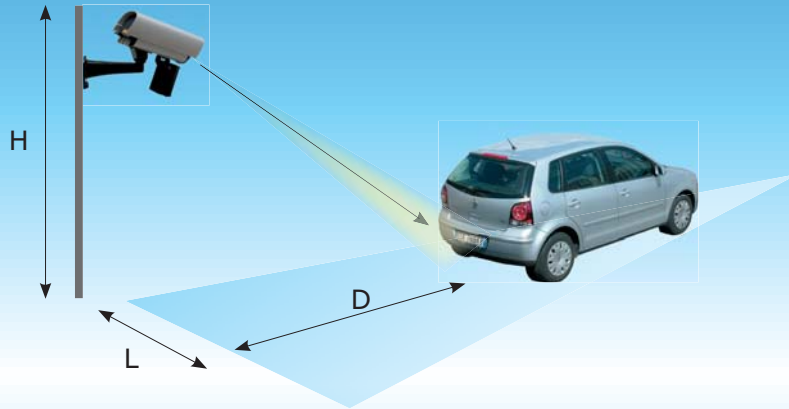


Image from the Plateview



**LADON CLEARLY DIFFERENT**

# Plate View Installation Guidelines



## PVPark



Max car speed 15mph (25Km/h)

Model	Plate to camera distance D (m)	Max installation height H (m)	Maximum lateral displacement from the centre of the plate L (m)	Field of View (Image Width) m
PVPark 3-5	3	1.4	1.4	1.8
	4	1.8	1.8	2.4
	5	2.3	2.3	3.0
PVPark 5-7	5	2.3	2.3	2.0
	6	2.8	2.8	2.4
	7	3.2	3.2	2.8
PVPark 7-9	7	3.2	3.2	2.1
	8	3.6	3.6	2.4
	9	4.2	4.2	2.7

## PVZoom 3-15



Max car speed 60mph (100Km/h)

Focal	Plate to camera distance D (m)	Max installation height H (m)	Maximum lateral displacement from the centre of the plate L (m)	Field of View (Image Width) m
10 mm	3 - 4	1.5	1.5	2
15 mm	4 - 8	2	2	2.5
25 mm	8 - 15	3	2	2.8

## PVSpeed



Max car speed 80mph (130Km/h)

Plate to camera distance D (m)	Max installation height H (m)	Maximum lateral displacement from the centre of the plate L (m)	Field of View (Image Width) m	
			PVSpeed 50	PVSpeed 75
16.0	3.40	2.25	1.54	1.02
16.5	3.51	2.32	1.58	1.06
17.0	3.61	2.39	1.63	1.09
17.5	3.72	2.46	1.68	1.12
18.0	3.82	2.53	1.73	1.15
18.5	3.93	2.60	1.78	1.18
19.0	4.04	2.67	1.82	1.22
19.5	4.14	2.74	1.87	1.25
20.0	4.25	2.81	1.92	1.28
20.5	4.36	2.88	1.97	1.31
21.0	4.46	2.95	2.02	1.34

## Ladon Car Plate Cameras - Plate View

The Plate View range is a special range of cameras purposely developed to clearly view the plate of a car, truck or motorbike, suitable for both Day & Night use.

Advanced antiblooming technology and special processing result in perfect images, without overexposed, blurred and unusable videos or stills.

A wide range of models are available for different speeds and distances making the Plate View family the perfect choice for a very wide range of applications.

### PVPark



#### Models:

<b>PVPark 3-5</b>	Working Distance 3m to 5m, 8.0mm Fixed lens
<b>PVPark 5-7</b>	Working Distance 5m to 7m, 12.0mm Fixed lens
<b>PVPark 7-9</b>	Working Distance 7m to 9m, 16.0mm Fixed lens
<b>PVPark 3-5-IP</b>	IP network data transmission version, Distance 3m to 5m, 8.0mm Fixed lens
<b>PVPark 5-7-IP</b>	IP network data transmission version, Distance 5m to 7m, 12.0mm Fixed lens
<b>PVPark 7-9-IP</b>	IP network data transmission version, Distance 7m to 9m, 16.0mm Fixed lens

#### Features

- Built in Infrared illuminators
- Anti-blooming technology
- Max car speed 15 mph (25Km/h)
- 3 choices of lens for Distance and Field of View (8.0, 12.0 and 16.0 mm)
- Continuous or pulsed illumination with different and variable light power
- Pulsed illumination synchronised with the video signal
- Internal keypad for infrared illuminator set up
- Network data transmission for infrared illuminator remote set up and interfaced to the Plate Reader system (PVPark-IP models only)
- 230V Power Supply
- Vandal proof housing
- IP66

### PVZoom



#### Models:

<b>PVZoom 3-15</b>	Working Distance 3m to 15m, Varifocal 10-25mm lens
<b>PVZoom 3-15-485</b>	RS485 interface version, Working Distance 3m to 15m, Varifocal 10-25mm
<b>PVZoom 3-15-IP</b>	IP network data transmission version and interface to the Plate Reader system, Distance 3m to 15m, Varifocal 10-25mm lens

#### Features

- Built in Infrared illuminators
- Anti-blooming technology
- Max car speed 60 mph (100Km/h)
- Motorised varifocal lens 10-25mm
- Continuous or pulsed illumination with different and variable light power
- Pulsed illumination synchronised with the video signal
- Internal keypad for infrared illuminator, zoom and focus set up
- Option for very useful and convenient RS485 interface for infrared illuminator, zoom and focus remote adjustments (PVZoom 3-15-485 model only)
- Option for network data transmission and interface to the Plate Reader system (PVZoom 3-15-IP model only)
- 230V Power Supply
- Vandal proof housing
- IP66

### PVSpeed

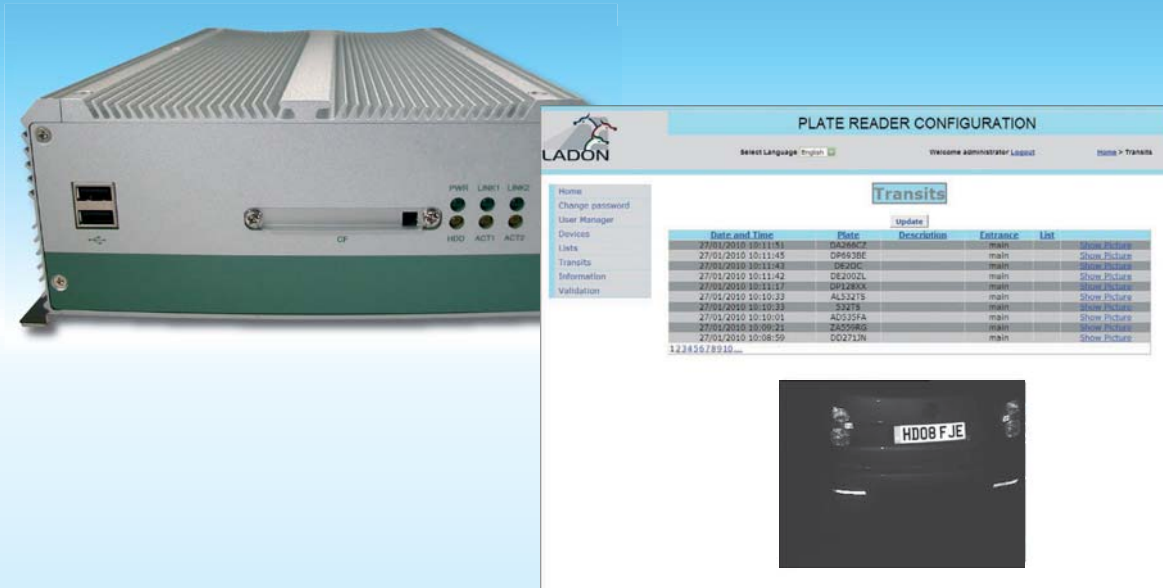


#### Models:

<b>PVSpeed 50-4</b>	Working Distance 15m to 21m, 50.0 mm Lens
<b>PVSpeed 75-4</b>	Working Distance 15m to 21m, 75.0 mm Lens

#### Features

- Max car speed 80 mph (130Km/h)
- 2 choices of lens for different Field of View
- Anti-blooming technology
- Separate LED Infrared illuminator
- Minimum plate to camera distance 15m
- Maximum plate to camera distance 21m
- 100-240Vac Power Supply
- IP66 Certified camera housing
- IP65 IR Illuminator power supply housing



## ANPR - Plate Reader Park Slow moving multiple barrier license plate reading system

### Features

- Advanced plate recognition technology
- Fast recognition for controlled access through barrier managed car parking systems
- Can recognise Car Plates from over 30 countries Worldwide
- Integrates with special cameras purposely design for clear images of car plates, avoiding blooming and overexposures
- Can be combined with standard analogue cameras or specific car plate cameras like the Ladon Plate View series.
- Watch front and back plates to match trailers and truck – Perfect for distribution companies
- Configuration and management via embedded web page

## ANPR - Plate Reader Road Fast moving license plate reading system

### Features

- Advanced high speed recognition technology
- Can recognise Car Plates from over 30 countries Worldwide
- Can be combined with standard analogue cameras or specific car plate cameras like the Ladon Plate View series.
- Can manage 2 x car plate cameras and 2 x overview cameras
- Integrated database with the records of the last 2000 vehicle activities
- Configuration and management via an embedded web page

## Plate Reader Park

### Features

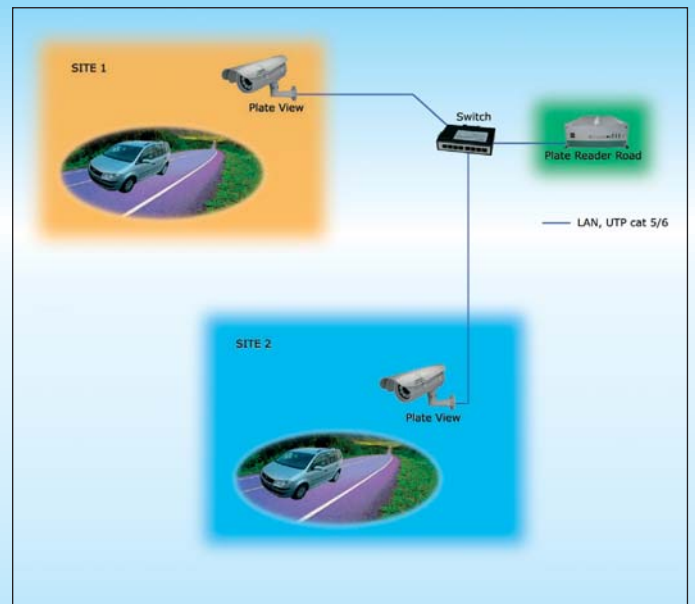
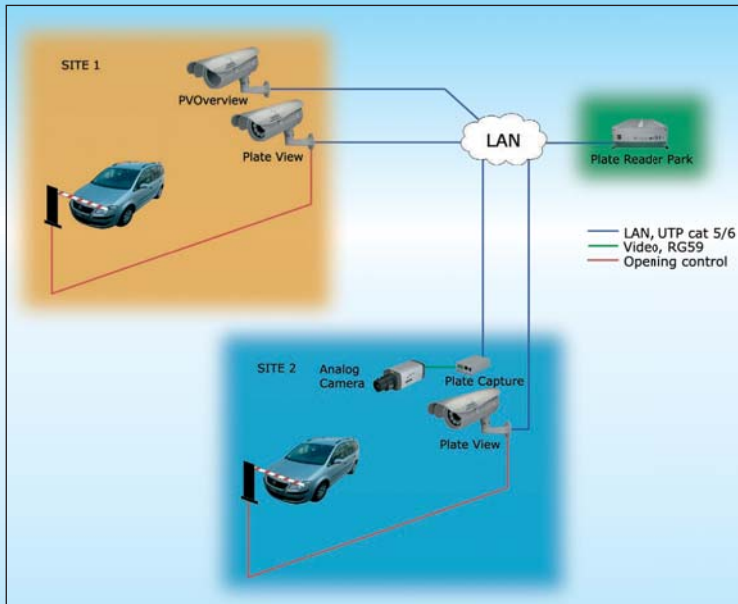
- 4, 8 or 16 camera systems available
- High quality camera images
- Integrated relay outputs for gate or barrier control
- Multiple Plate View cameras can be connected to the same Plate Reader for a cost effective system
- Very easy to install using IP technology
- Link between car plate cameras and plate reader using LAN

## Plate Reader Road

### Features

- Reads up to 50 plates per second
- High quality camera images
- Integrated database for recording multiple vehicles
- 2 car plate cameras can be connected to the same Plate Reader
- Very easy to install using IP technology
- Link between car plate cameras and Plate Reader using LAN

### Configuration Example



### Applications

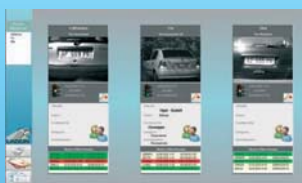
- Car Park Barrier Control and charging
- Unauthorised street parking
- Logistic / Distribution Companies
- Trailer verification and authorisation
- Gas and service stations

### Applications

- Traffic control systems
- Vehicle recognition at speed
- Town Centre & Street monitoring

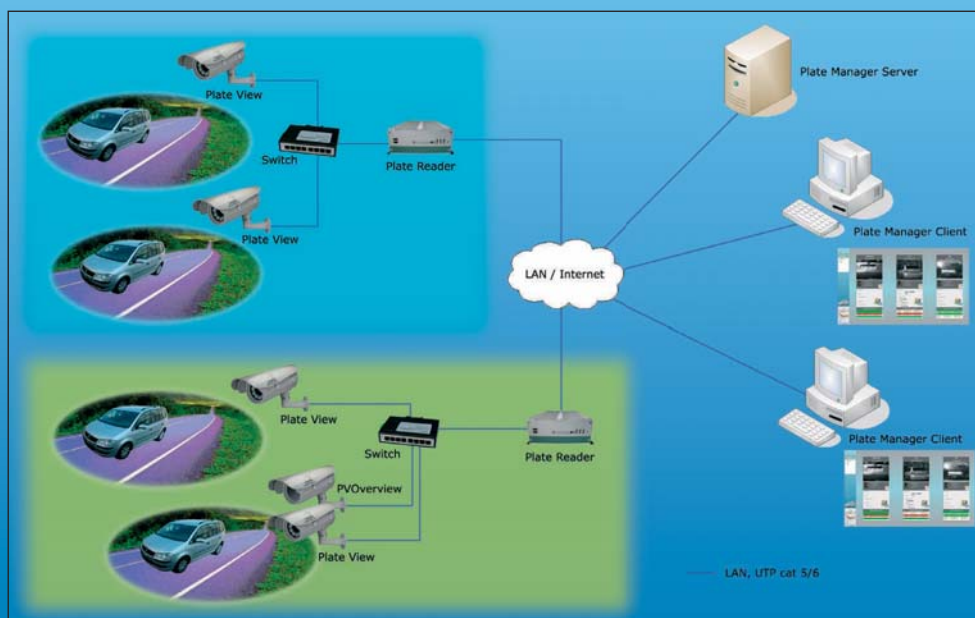
## Plate Manager

### Client-server management software for Plate Reader Systems



### Features

- Client-server structure
- Advanced plate authorization management (on time, temporary, momentary ...)
- Real-time barrier control
- Advanced user management
- Based on LAN



## PVOverview Over View camera



### Features

- Camera with mechanical Day-Night function
- Sony 1/3" CCD
- Selectable Exposure time
- 3.0-8.0mm varifocal lens - IR compatible
- Integrated video server
- MPEG4 video compression
- Max Resolution 704x576
- Maximum frequency 25fps
- Integrated web page
- View through Ladon software
- Vandal resistant housing with easy opening system
- Cable protection
- Integrated heater
- IP67 protection
- Power: 230Vac

## Plate Capture

Special Video server for interfacing  
with Plate Reader Systems



### Features

- Analog video input from BNC connector
- MPEG4 video compression
- Maximum Resolution 704x576
- Maximum frequency 25fps
- Integrated web page
- View through Ladon software

## OHV-001CP

Pole bracket for Plate View Cameras



### Features

- Maximum pole size 210 mm
- Minimum pole size 45 mm



Distributed by: